

10 Bach Chorals

Flugelhorn 1

J.S. Bach
arr. G. Giesbertz

1. Aus Tiefer Not shrei' ich zu dir (Koraal 10)

Two staves of musical notation for the first chorale. The first staff begins with a treble clef, a common time signature (C), and a repeat sign. The melody consists of quarter and eighth notes, with some notes beamed together. The second staff continues the melody with similar rhythmic patterns and includes a fermata over the final note.

2. Puer natus in Bethlehem (Koraal 12)

Two staves of musical notation for the second chorale. The first staff starts with a treble clef and a 3/4 time signature. The melody is composed of quarter and eighth notes. The second staff continues the piece, ending with a fermata over the final note.

3. Erschienen ist der herliche Tag (Koraal 17)

Two staves of musical notation for the third chorale. The first staff begins with a treble clef and a key signature of one sharp (F#). The melody features quarter and eighth notes. The second staff continues the melody and concludes with a fermata over the final note.

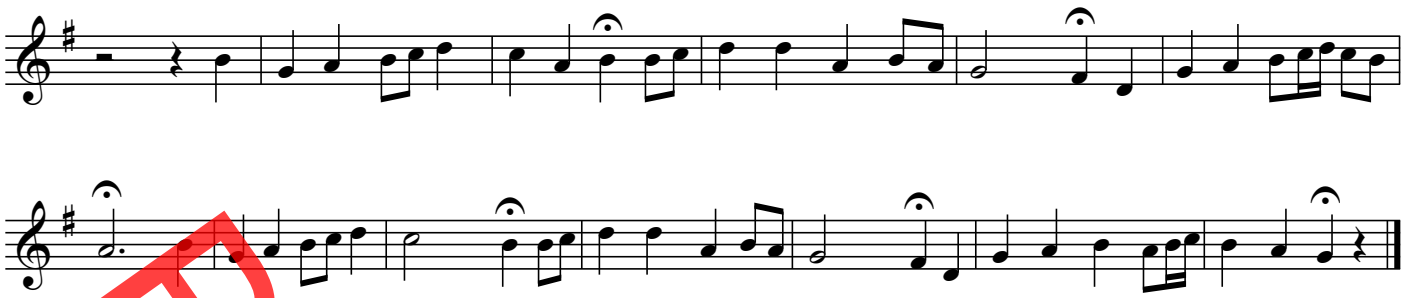
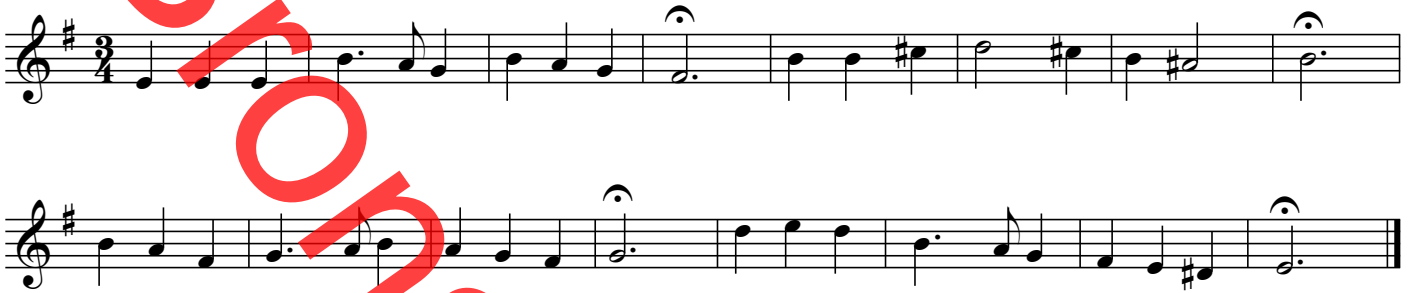
4. Freu'dich sehr, o meine Seele (Koraal 29)

Two staves of musical notation for the fourth chorale. The first staff starts with a treble clef and a key signature of one sharp (F#). The melody is written in a simple, rhythmic style. The second staff continues the piece and ends with a fermata over the final note.

Bronsheim Music

5. Du Friedefürst, Herr Jesu Christ (Koraal 42)

Two staves of musical notation for the fifth chorale. The first staff begins with a treble clef and a key signature of two flats (Bb). It includes a repeat sign and a first ending bracket. The second staff continues the melody and ends with a fermata over the final note.

6. In allen meinen Taten (Koraal 50)**7. Das neugebor'ne Kindlein (Koraal 53)****8. Heut'triumphieret Gottes Sohn (Koraal 79)****9. Wach' auf, mein Herz, und singe (Koraal 93)****10. Gott sei uns gnädig und barmherzig (Koraal 320)**